

SoloSound WOOD



A = 12mm
 B = 24mm
 C = 36mm

This acoustic range comes with a MDF backing layer which provides for an excellent acoustic performance. The acoustic Performance specially in the low frequency range (human speaking range is very high absorbing) The timber laths come on a perforated veneered black MDF with 8,3% open surface but can be made to suit bespoke dimensions and specific requirements.

The SoloSound standard panel is made with an overall thickness of approx. 25mm. The back of the above allowing for additional acoustic mineral wool to be installed for a better sound absorption. The product is available in different options of veneered laths. The veneer consists of Oak, Walnut, and Canadian Maple to name a few – unique finishes can also be offered through staining of the veneers.

Fire Behaviour:

D-S3,d2 (normal flammability)
 B-s2,d0

Laths:

veneered black colored MDF
 Slat width: 44mm on 20mm Gap between slats
 Slat thickness: 19mm

Black MDF:

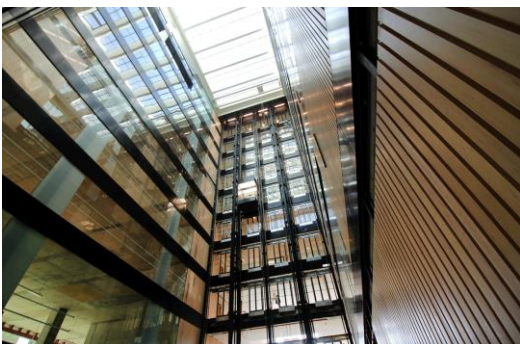
Thickness 16mm
 Color: Standard black

Dimensions

Standard: length 2400mm and 3000mm
 width 192mm
 thickness 25mm

Installation:

Mount with Stainless Steel Clips
 mineral wool 60mm for best sound absorbing values



Built up	100mm
cavity	5mm
Wool	30mm
Panel thickness	25mm
Alpha w	0,40
NRC	0,55
SAA	0,53

