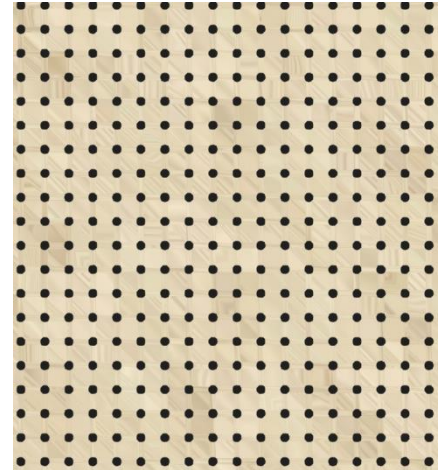


MicroSound-1

Specification Text

This innovative product line merges the most up-to-date design aesthetic with high performing sound absorption capabilities. This panel system can be used on both wall and ceiling applications. The three-part layered technology provides ultimate sound absorption varying with different perforation sizes.



Type	Burke Acoustics Microsound 1
Hole Diameter	1,0mm
Distance hole centre	3,0mm / 3,0mm Parallel
Core/substrate	MDF / MDF Fire Rated / Plywood / Gypsum fibre board
Edges	Industrial saw cut
Edge shape	Squared flat / Edge banding (ABS 2mm, veneer), Profiled
Acoustic felt	Black (not visible)
Thickness	16mm - 20mm

MicroSound-1

Dimensions	Standard: 600 x 600mm / 2400 x 1200mm / 2760 x 1300mm Maximum: 3000mm x 1300mm			
Surface	HPL / CPL, Veneer, Colour lacquer			
Surface treatment	Lacquered Matt (25% sheen), Dull Matt (10% sheen), Transparent (veneer only)			
Veneer Direction	Along length / Along width			
Joints	1mm - 50mm			
Installation System	Ceiling demountable for Grid T15 or T24 (others on Request)			
	<i>Wall:</i> Metal profiles to hang on the wall for non-visible installation			
	<i>Ceiling:</i> T15 or T24 (others on request)			
Fire behaviour	D-s3,d2 (normal flammability) B-s1,d0 (Veneer, Lacquer) B-s2,d0 (Laminate) A2-s1,d0 (Core material only)			
Acoustics absorption	<i>Built up</i>	<i>50mm</i>	<i>220mm</i>	<i>420mm</i>
	Cavity	0mm	150mm	350mm
	Wool	30mm	50mm	50mm
	Panel thickness	20mm	20mm	16mm
	Alpha w	0,82	0,93	0,94
	NRC	0,85	0,95	0,90
	SAA	0,84	0,94	0,90
DoP	Available			