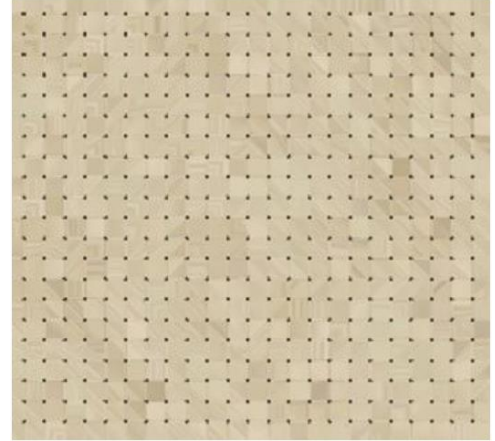


ProSound 4-4-1.5

Specification Text

The ProSound product line offers high performing sound absorption capabilities through a multitude of different sized holes. This panel system can be used on both wall and ceiling applications



Type	Burke Acoustics ProSound 4-4-1.5
Hole Diameter	1,5mm
Distance hole centre	4,0mm / 4,0mm Parallel
Non-Perforated Frame	20mm or to be confirmed
Core/substrate	MDF / MDF Fire Rated / Plywood / Gypsum fibre board
Edges	Industrial saw cut
Edge shape	Squared flat / Edge banding (ABS 2mm, veneer), Profiled
Acoustic felt	Black (not visible)
Thickness	16mm - 20mm

ProSound 4-4-1.5

Dimensions	Standard: 600 x 600mm / 2400 x 1200mm / 2760 x 1300mm Maximum: 3000mm x 1300mm			
Surface	HPL / CPL, Veneer, Colour lacquer, digital print			
Surface treatment	Lacquered Matt (25% sheen), Dull Matt (10% sheen), Transparent (veneer only)			
Veneer Direction	Along length / Along width			
Joints	1mm - 50mm			
	Ceiling demountable for Grid T15 or T24 (others on Request)			
Installation System	<i>Wall:</i> Metal profiles to hang on the wall for non-visible installation <i>Ceiling:</i> T15 or T24 (others on request)			
Fire behaviour	D-s3,d2 (normal flammability) B-s1,d0 (Veneer, Lacquer) B-s2,d0 (Laminate) A2-s1,d0 (Veneer, Microlaminate)			
Acoustics absorption	<i>Built up</i>	<i>46mm</i>	<i>216mm</i>	<i>416mm</i>
	Cavity	0mm	150mm	350mm
	Wool	30mm	50mm	50mm
	Panel thickness	16mm	16mm	16mm
	Alpha w	0,63	0,88	0,89
	NRC	0,80	0,95	0,90
	SAA	0,78	0,94	0,89
DoP	Available			